



- stable farmer income
- regional development
- biodiversity, natural beauty
- open space

REP – an introduction

Reinier de Man

REP facilitator



THE ISSUE

- Profound and rapid changes in Europe's rural areas
 - intensification of agriculture
 - abandonment of low productivity areas
 - urbanisation
 - etc.
- Fundamental changes in global context, EU policies and subsidy systems
 - liberalisation, globalisation, increasing imports from outside EU
 - alarmingly low effectiveness of EU subsidies,
 - EU agriculture reform
- Risks:
 - loss of agriculture linked biodiversity, loss of open space
 - damage to cultural and esthetic values
 - no sustainable income for rural population



OPPORTUNITIES

- Sustainable Rural Development creates opportunities
 - rural areas represent economic value
 - development of rural area = regional development: jobs and income + biodiversity
 - multi-purpose agriculture
 - increasing service functions of 'farmer'
 - optimally linked with new EU policy regime: towards payment for rural services
 - enhancing performance of public money spent
- Development of Urban – Rural link
 - rural areas are important for urban development
 - urban spending creates rural income
 - rural areas represent high value to urban population

FROM KNOWLEDGE TO IMPLEMENTATION

- There is a growing body of practical, policy and business relevant knowledge
 - on sustainable development of rural areas (also linked to urban development)
 - on policy instruments, investment models, etc.
 - on real contributions to economy and ecology
 - both on the general and on the regionally or locally specific level
- There is a need to link this (mainly project-based) knowledge to
 - new projects, new areas, ...
 - policy makers (regional, national, EU)
 - private investors



REP

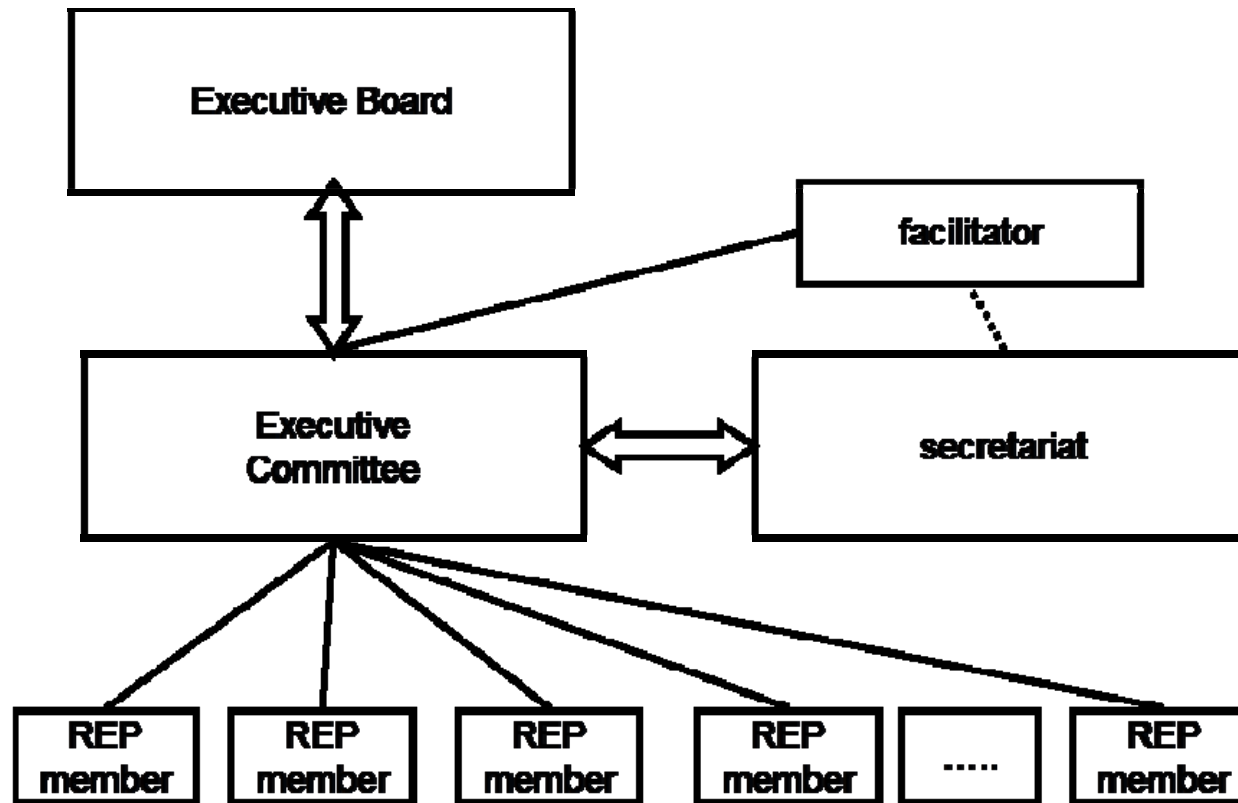
- REP is at the forefront of knowledge exchange and policy formulation for sustainable rural development in Europe:
 - *development that creates added economic value at the local and regional level, protects and develops biodiversity and contributes to social cohesion.*
- REP is connecting
 - knowledge and practical experience on the ground
 - with policy development and implementation at the European and national level.
- REP is the network for effective and innovative solutions
 - that create the right conditions for financing sustainable rural development through co-operation between the public and the private sector.
 - REP is providing a basis for maximising the performance of public money for rural development and agriculture.



REP HISTORY & FUTURE

1. Constitution of REP at Lien, Norway (July 2004)
 - Joint initiative of Alterra (NL) and Planteforsk (N)
 - → Lien declaration as kick-off for REP
2. Setting up REP (2005-2007)
 - first phase (2006) financed by LIFESCAPE/Interreg III
 - creating governance, membership, sustainable finance (2007)
3. REP Workshop in Falenty, Poland (October 2006)
 - First step in collecting key projects / partners
4. REP Workshop in Porto, Portugal (October 2007)
 - High level symposium for EU and national policy makers
 - Workshop focussing on Southern Europe

REP GOVERNANCE





CONTACT

- Dr. Reinier de Man
 - sustainable business development
Kloksteeg 33, 2311 SK Leiden, The Netherlands
 - Tel: +31 71 512 8422, mobile +31 6 5316 5441
 - reinier.de.man@rdeman.nl
- Neil Hill
 - South Downs JC
 - Victorian Business Centre, Ford Lane, Ford BN18 0EF
 - Tel: 01243 558700
 - nhill@southdowns-aonb.gov.uk